



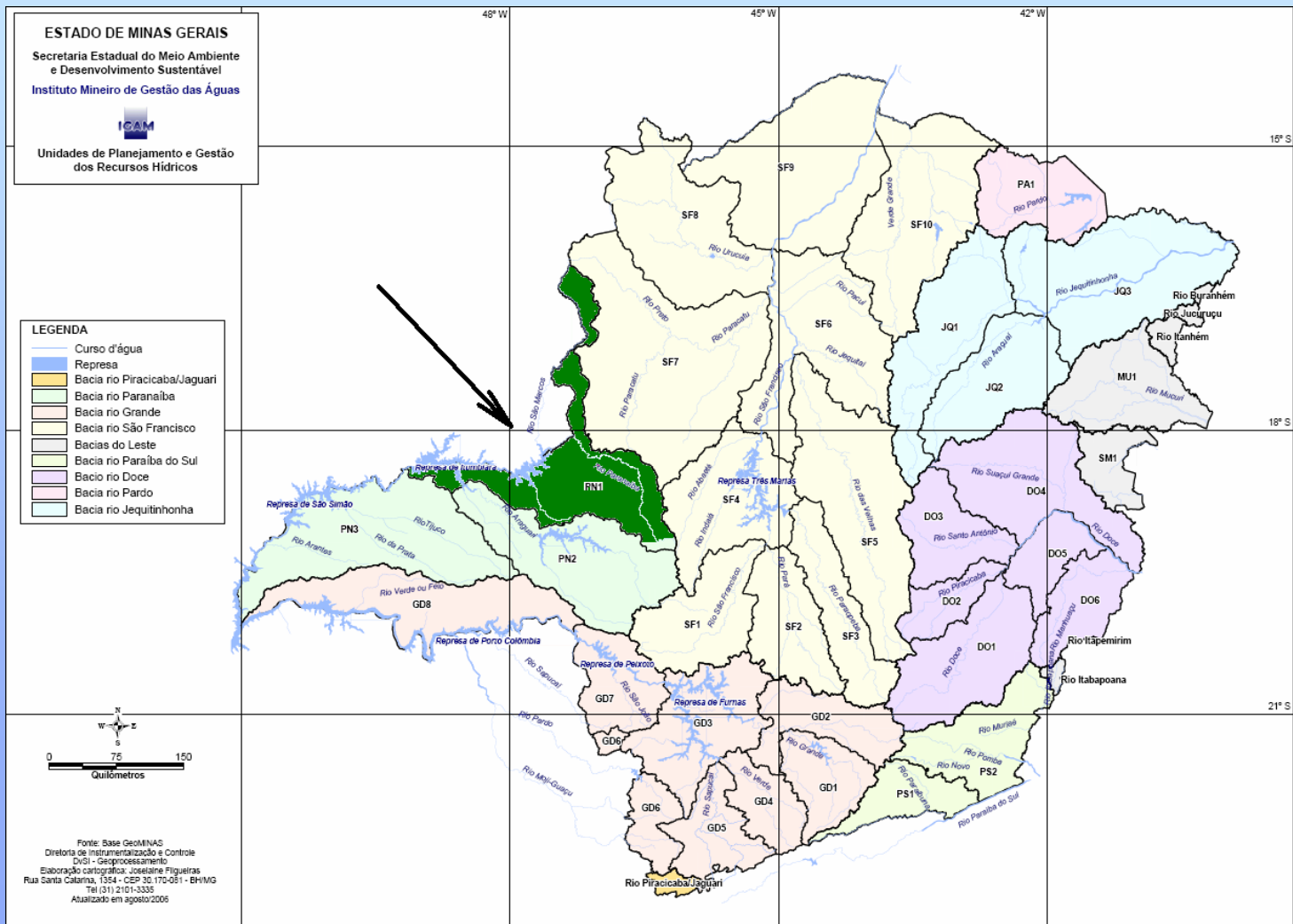
FAPEMIG

Seminário: Práticas conservacionistas

DELINEAMENTO DE ÁREAS COM POTENCIAL
EROSIVO PARA A BACIA DO RIO PARANAÍBA
(PN1 – IGAM)

Patos de Minas – Janeiro 2010

O projeto se propõem a delinear as áreas de perda de solo por meio da Equação Universal de Perdas de Solo (EUPS).



Município

- Abadia dos Dourados
- Araguari
- Araporã
- Carmo do Paranaíba
- Cascalho Rico
- Coromandel
- Cruzeiro da Fortaleza
- Douradoquara
- Estrela do Sul
- Grupiara
- Guarda-Mor
- Guimarânia
- Irai de Minas
- Lagamar
- Lagoa Formosa
- Monte Carmelo
- Nova Ponte
- Paracatu
- Patos de Minas
- Patrocínio
- Presidente Olegário
- Rio Paranaíba
- Romaria
- Serra do Salitre
- Tupaciguara
- Unhai

Fonte: Base GeomINAS
 Diretoria de Instrumentação e Controle
 DivSI - Geoprocessamento
 Elaboração cartográfica: Joseline Figueiras
 Rua Santa Catarina, 1554 - CEP: 30.710-051 - BH/MG
 Tel (31) 2101-3335
 Atualizado em agosto/2006

$$A = R.K.(L.S).C.P$$

Em que:

A : perda de solo por unidade de área, t.ha-1.ano-1;

R : fator erosividade da chuva, MJ.ha-1.mm.h-1.ano-1;

K : fator erodibilidade do solo, (t ha-1)/(MJ.ha-1.mm.h-1);

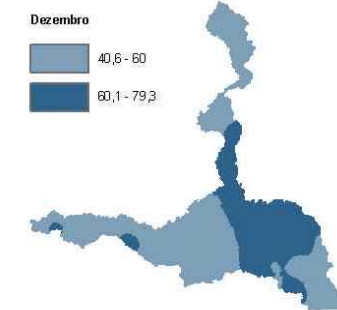
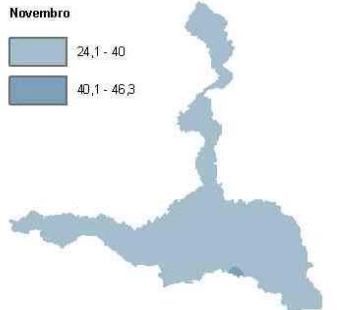
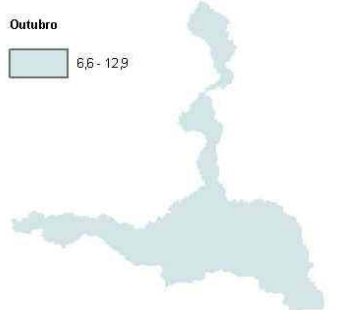
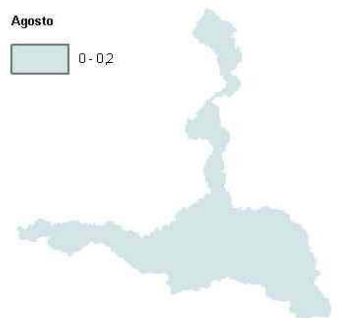
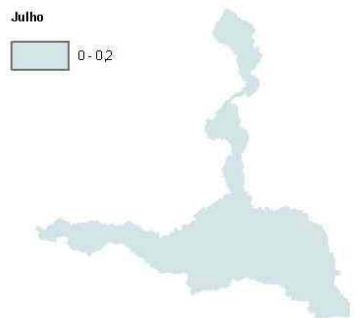
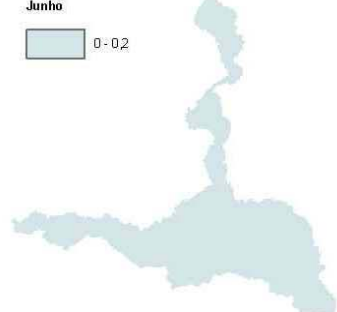
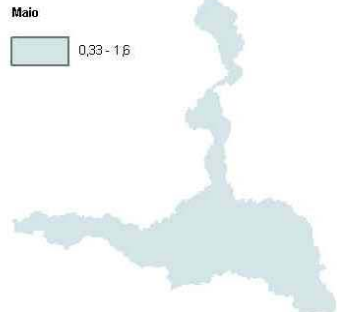
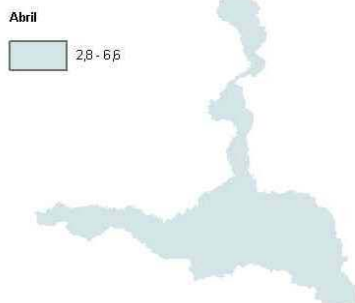
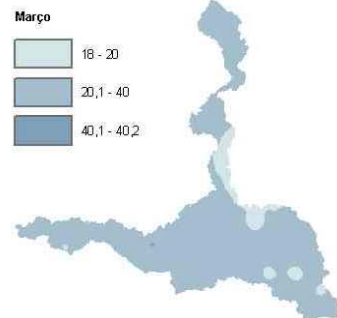
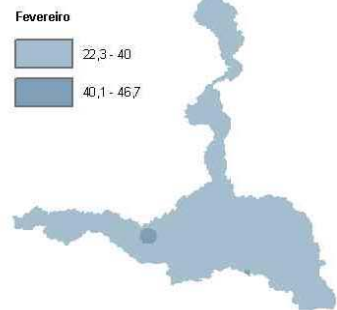
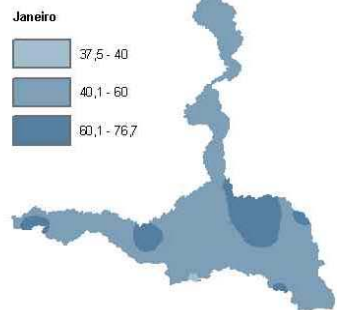
L : fator que leva em conta a distância ao longo da qual ocorre o escoamento

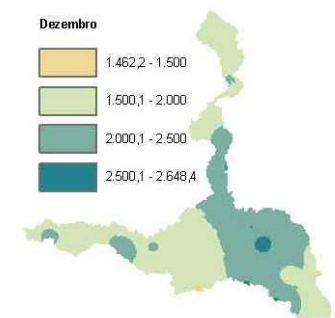
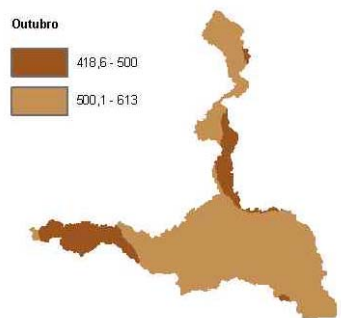
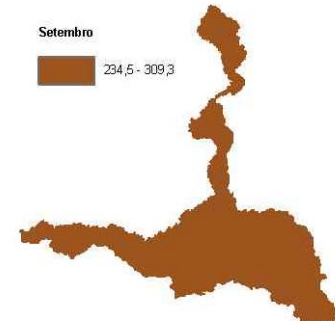
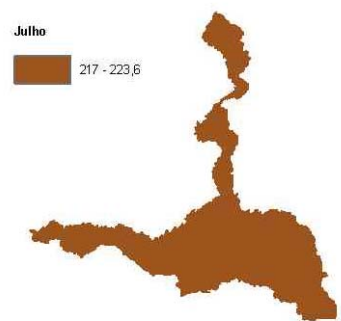
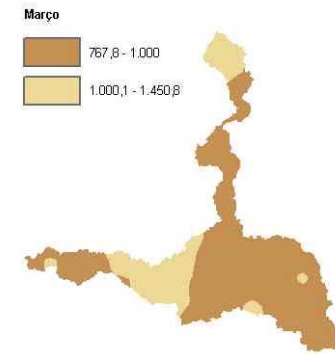
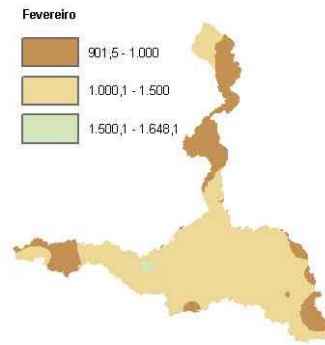
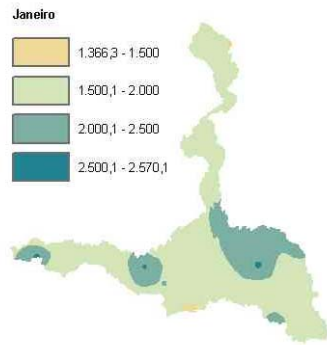
superficial, adimensional;

S : fator que considera a declividade do terreno, adimensional;

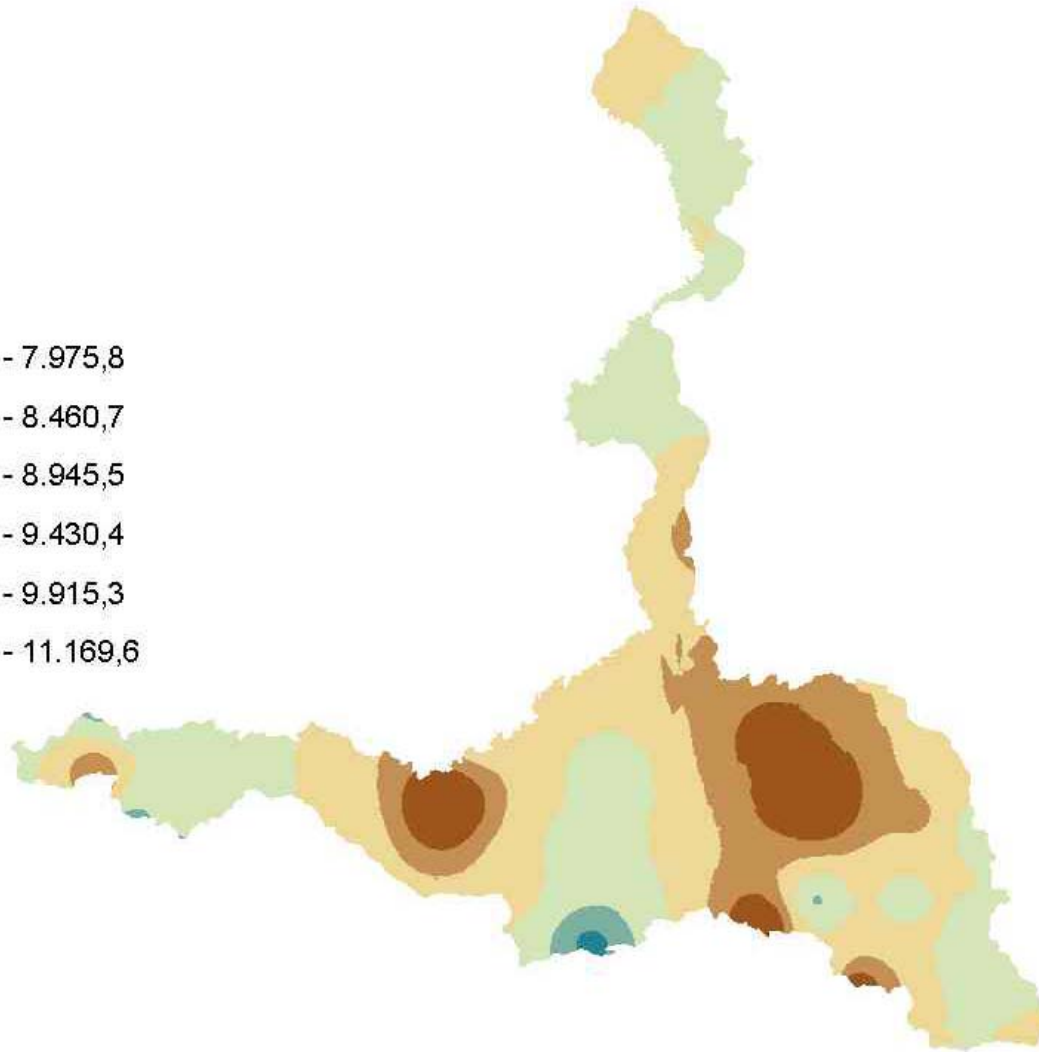
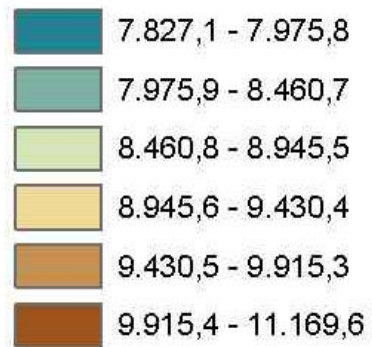
C : fator que leva em conta o uso e manejo do solo, adimensional; e

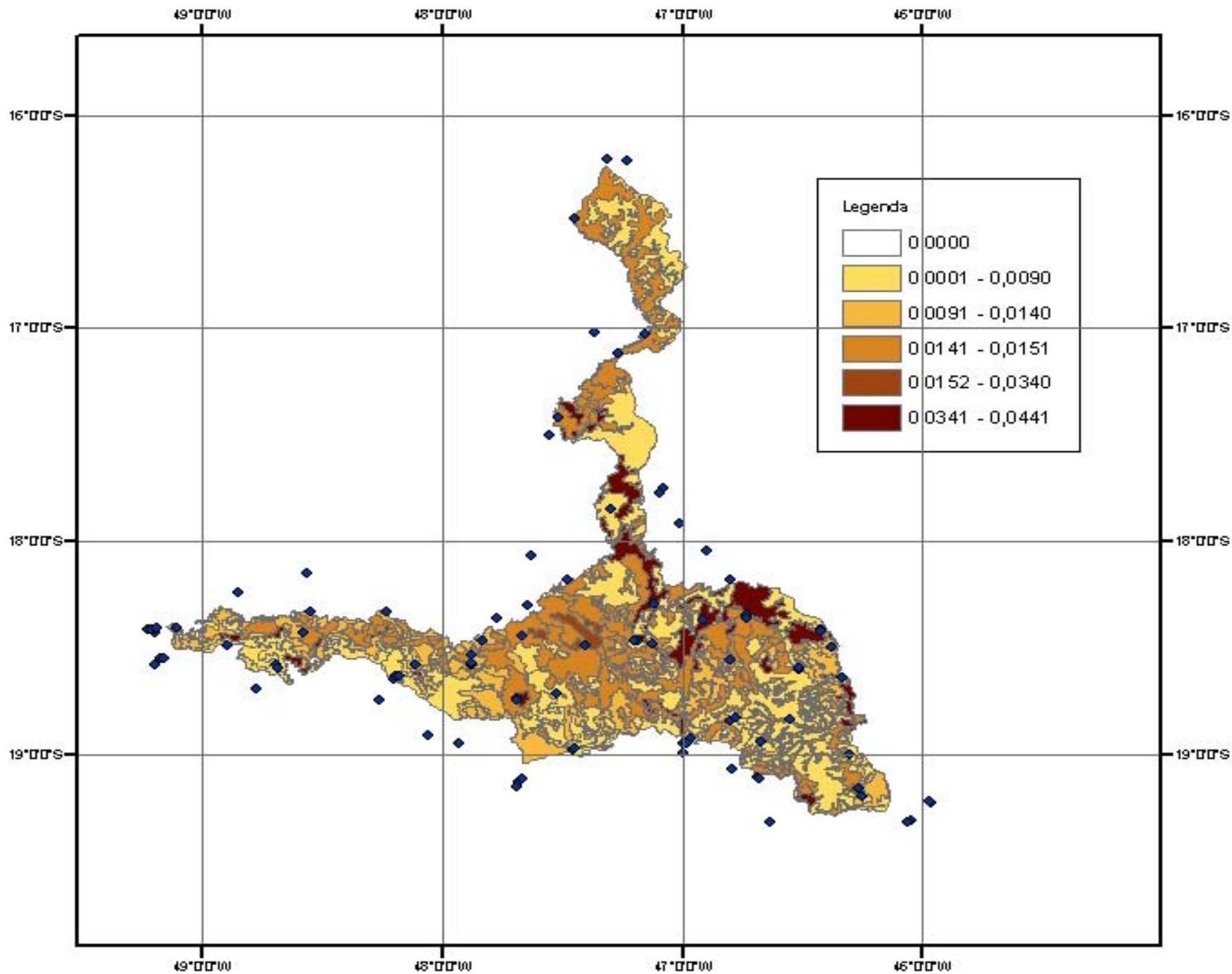
P : fator que considera as práticas conservacionistas adotadas, adimensional.

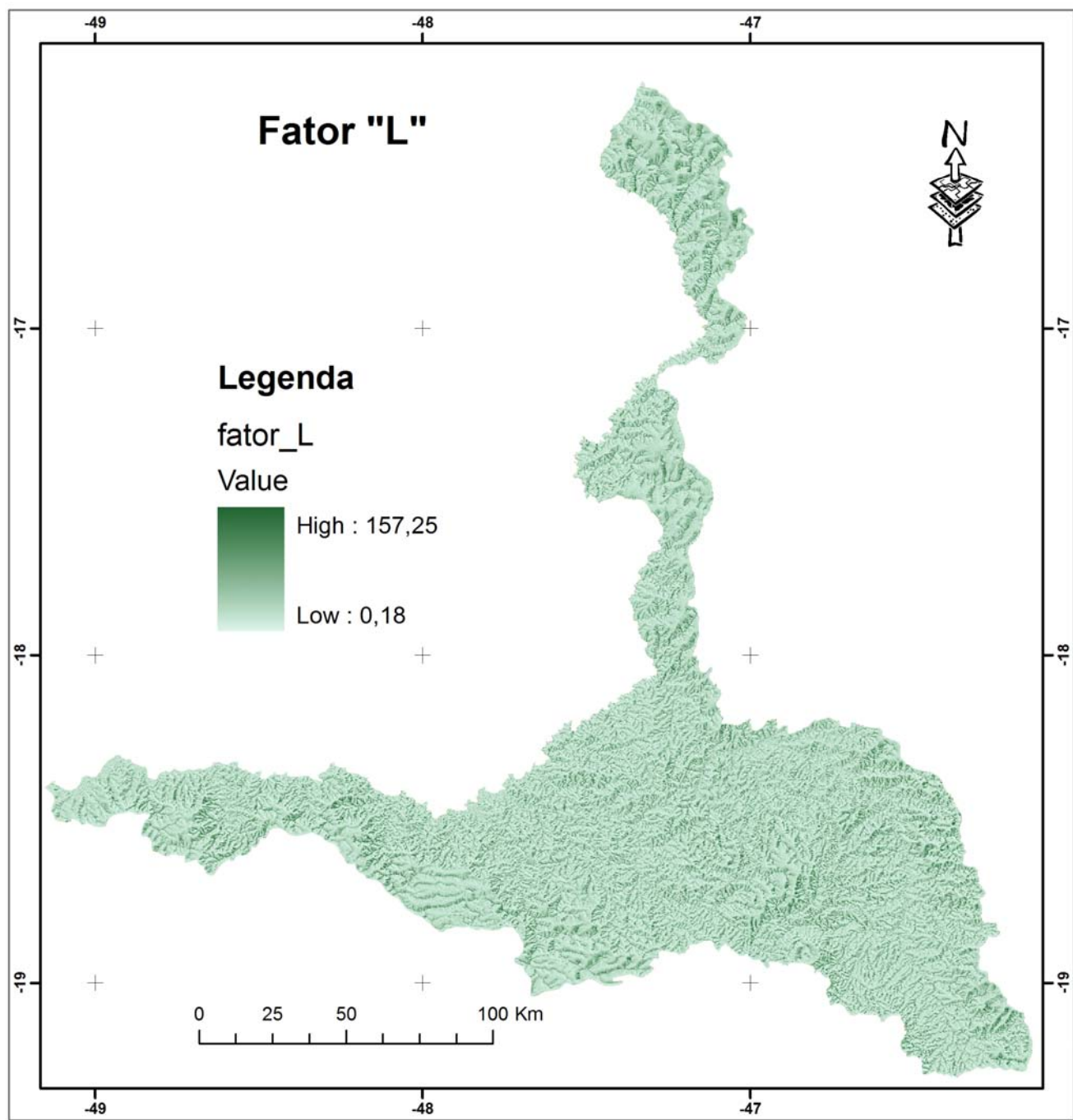


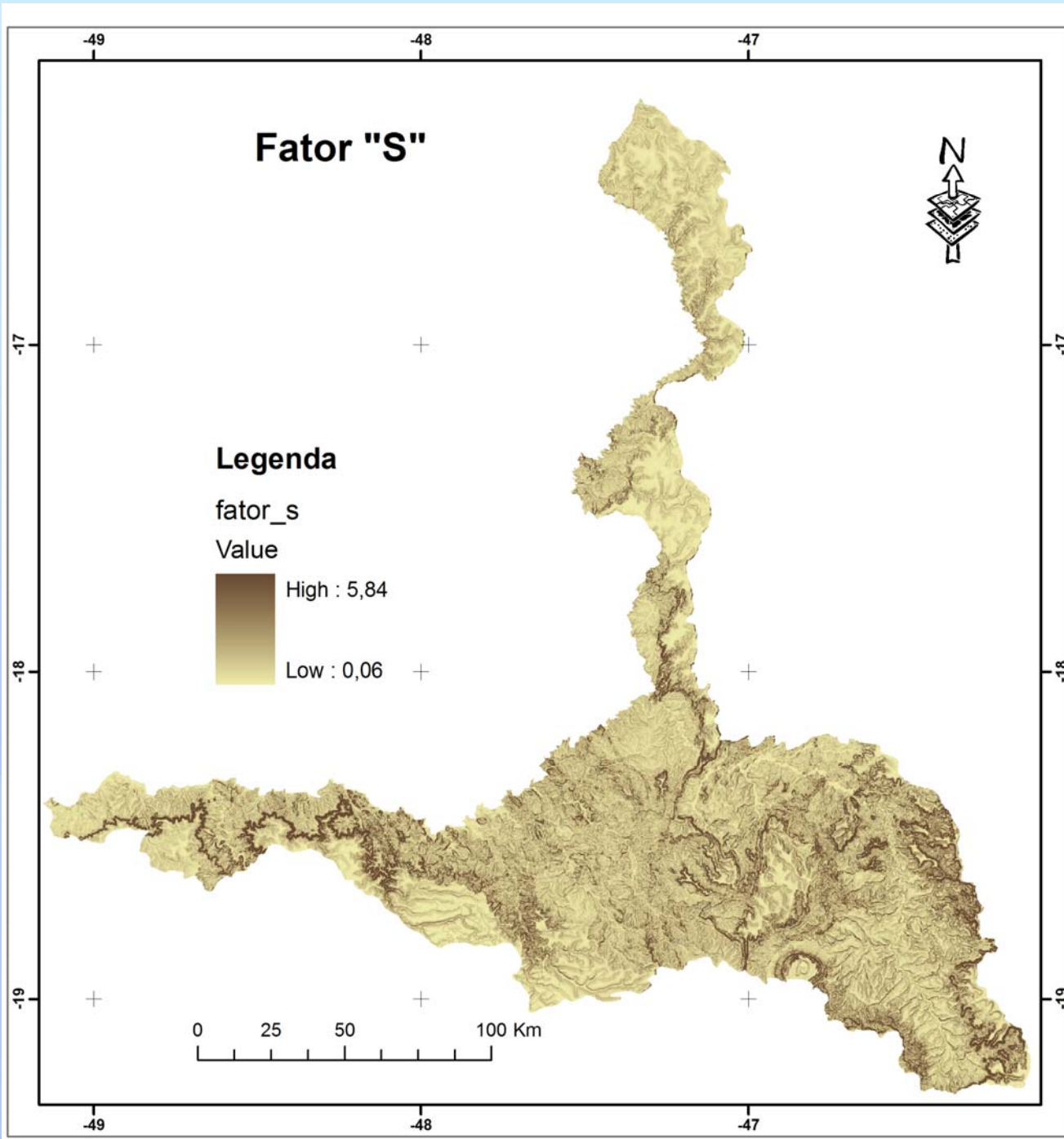


EI30











Título

Uso do Solo

Autores

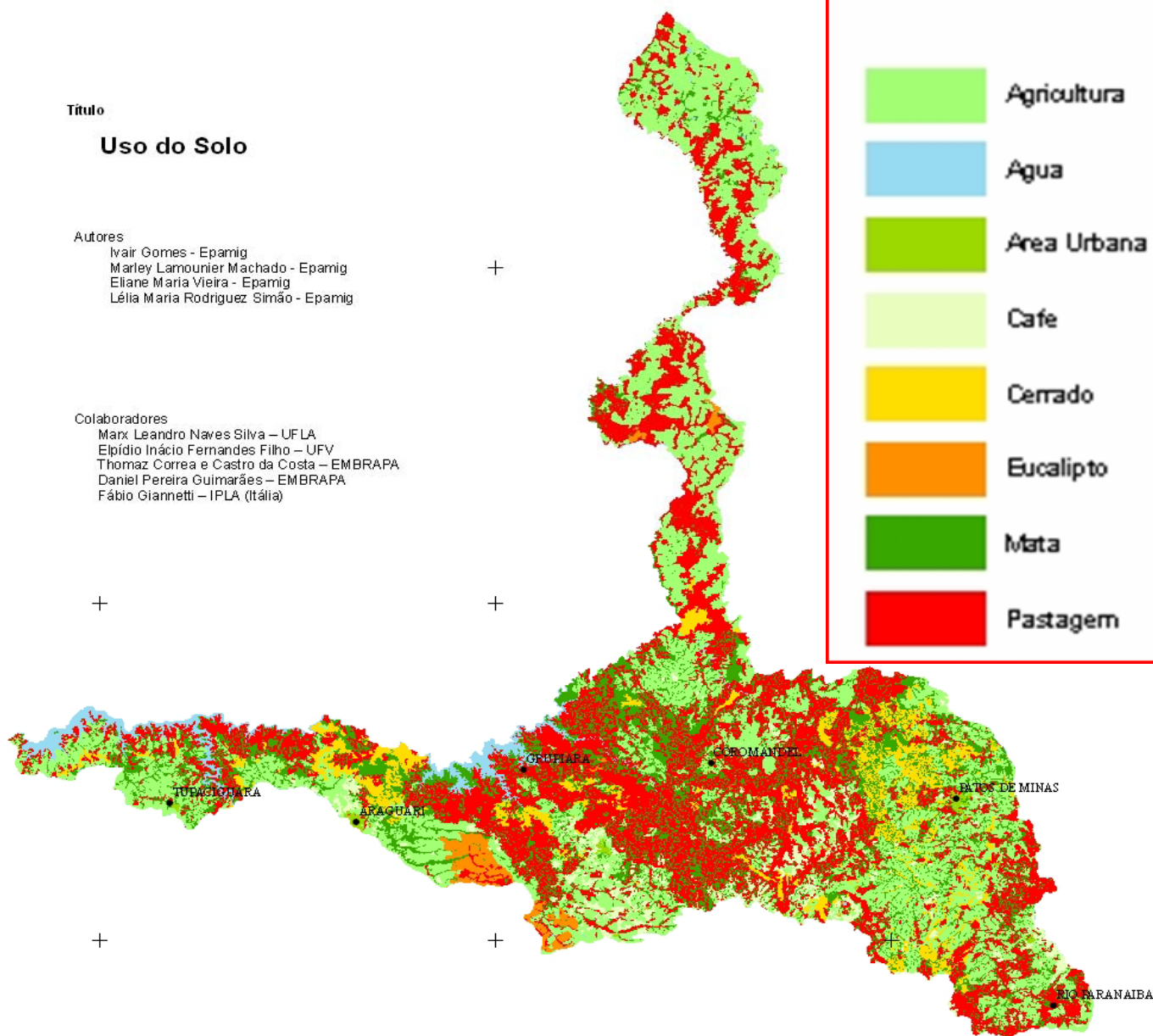
Ivaír Gomes - Epamig
Marley Lamounier Machado - Epamig
Eliane Maria Vieira - Epamig
Lélia Maria Rodriguez Simão - Epamig

Colaboradores

Marx Leandro Naves Silva – UFPA
Elpídio Inácio Fernandes Filho – UFV
Thomaz Correa e Castro da Costa – EMBRAPA
Daniel Pereira Guimarães – EMBRAPA
Fábio Giannetti – IPLA (Itália)

LEGENDA (Uso)

-  Agricultura
-  Agua
-  Area Urbana
-  Cafe
-  Cerrado
-  Eucalipto
-  Mata
-  Pastagem



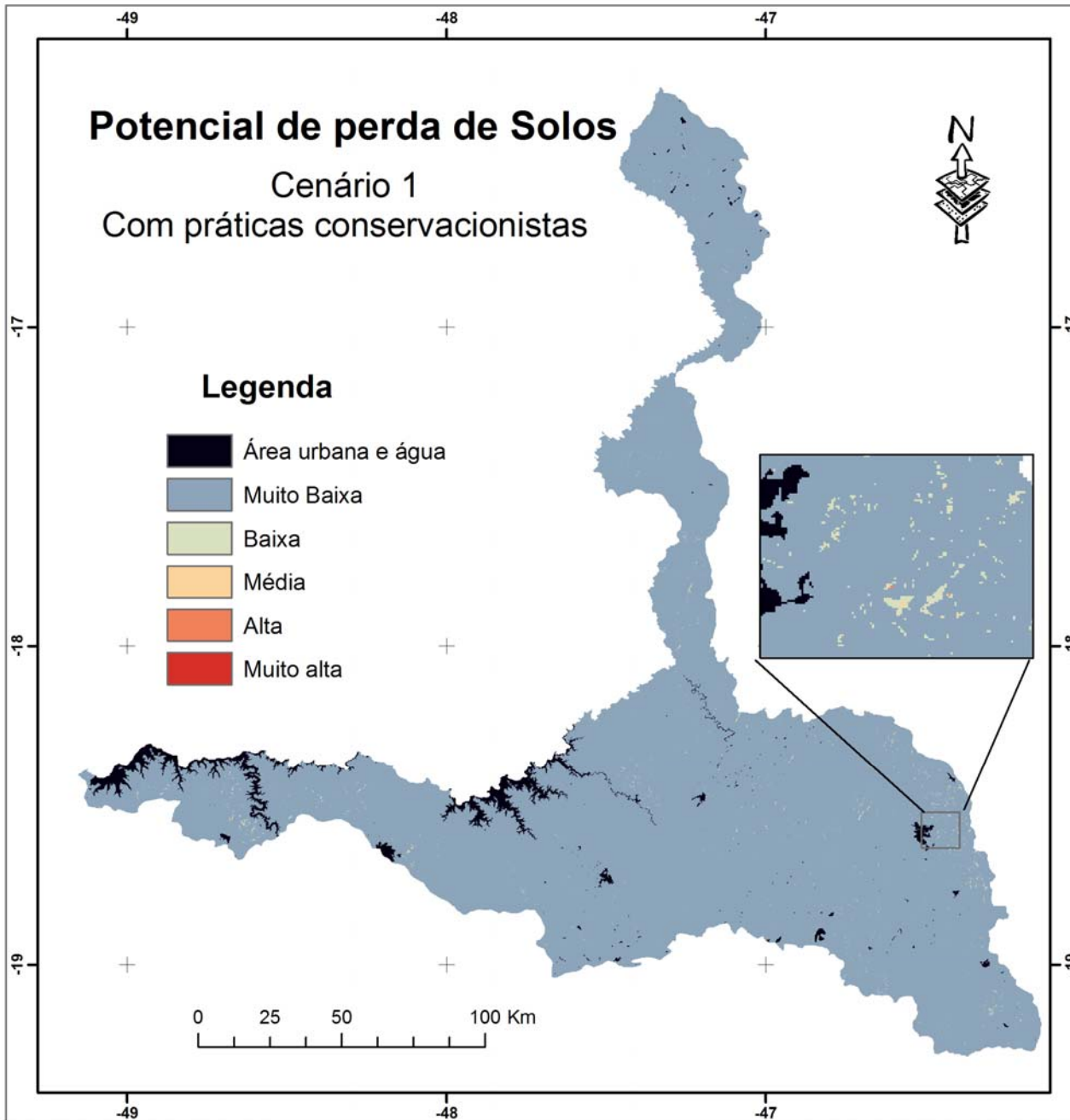
Potencial de perda de Solos

Cenário 1
Com práticas conservacionistas



Legenda

- Área urbana e água
- Muito Baixa
- Baixa
- Média
- Alta
- Muito alta



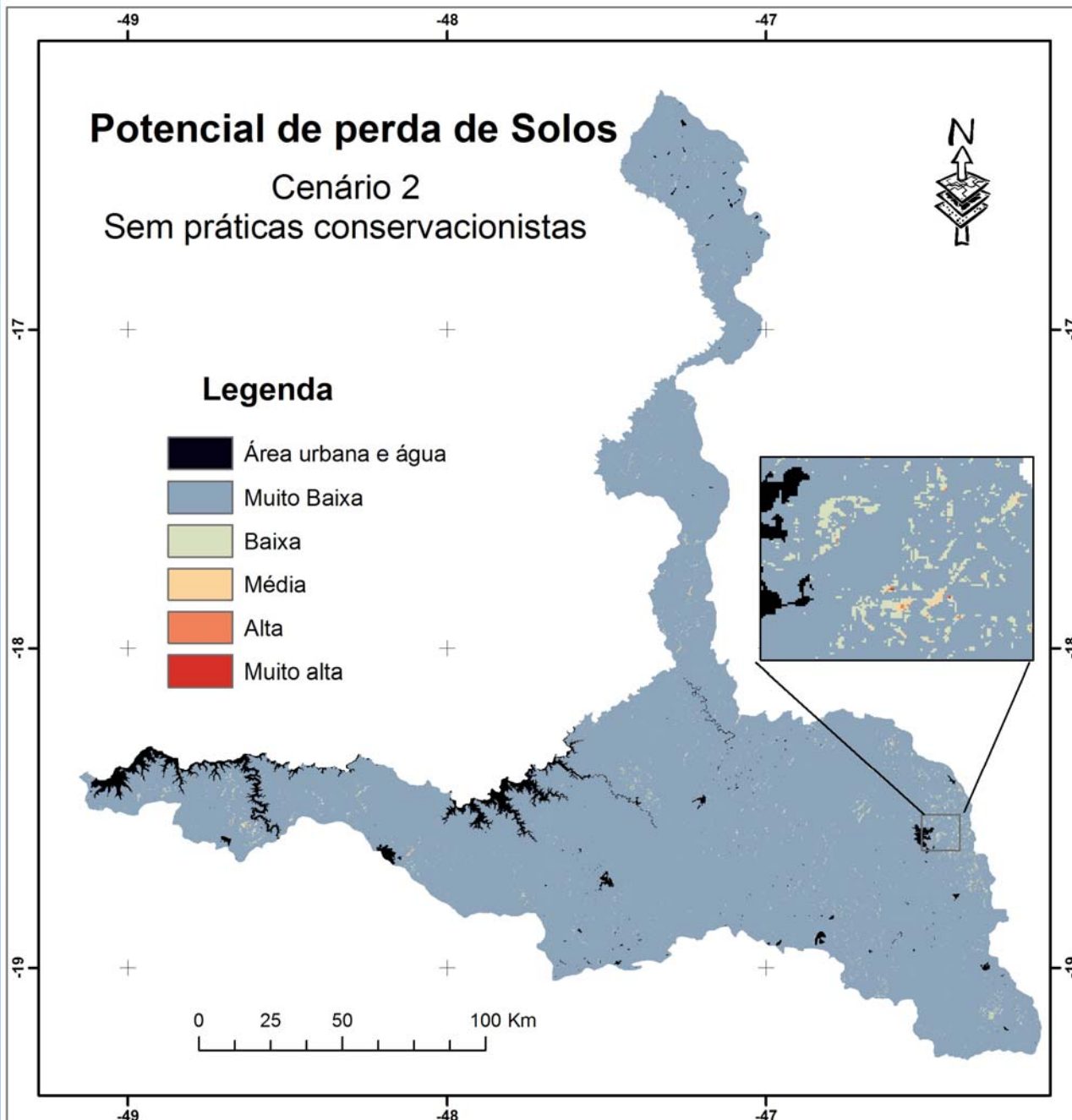
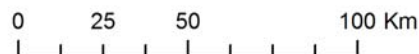
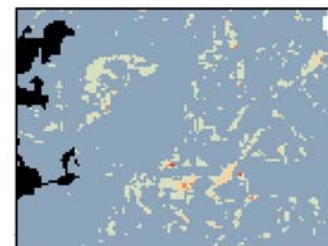
Potencial de perda de Solos

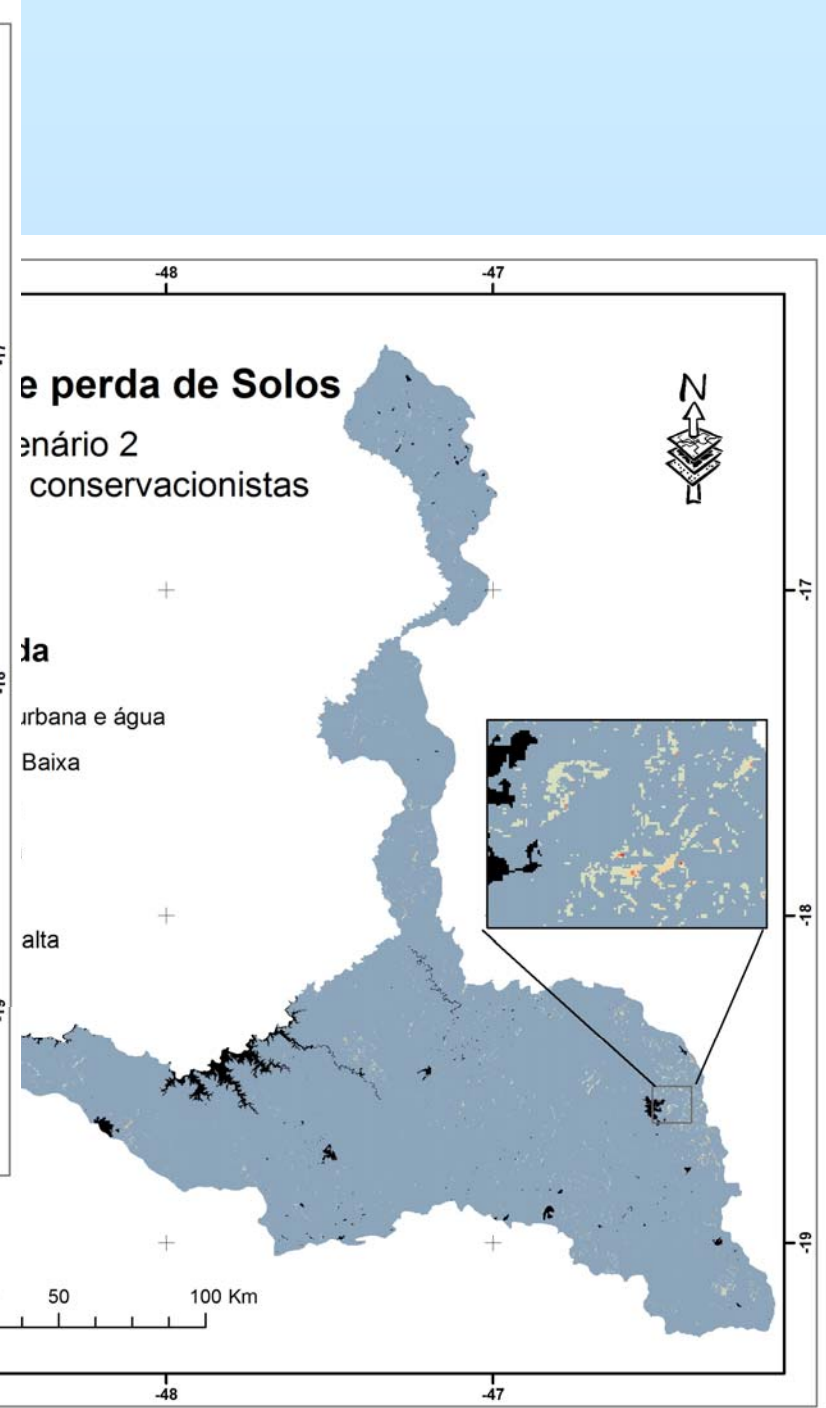
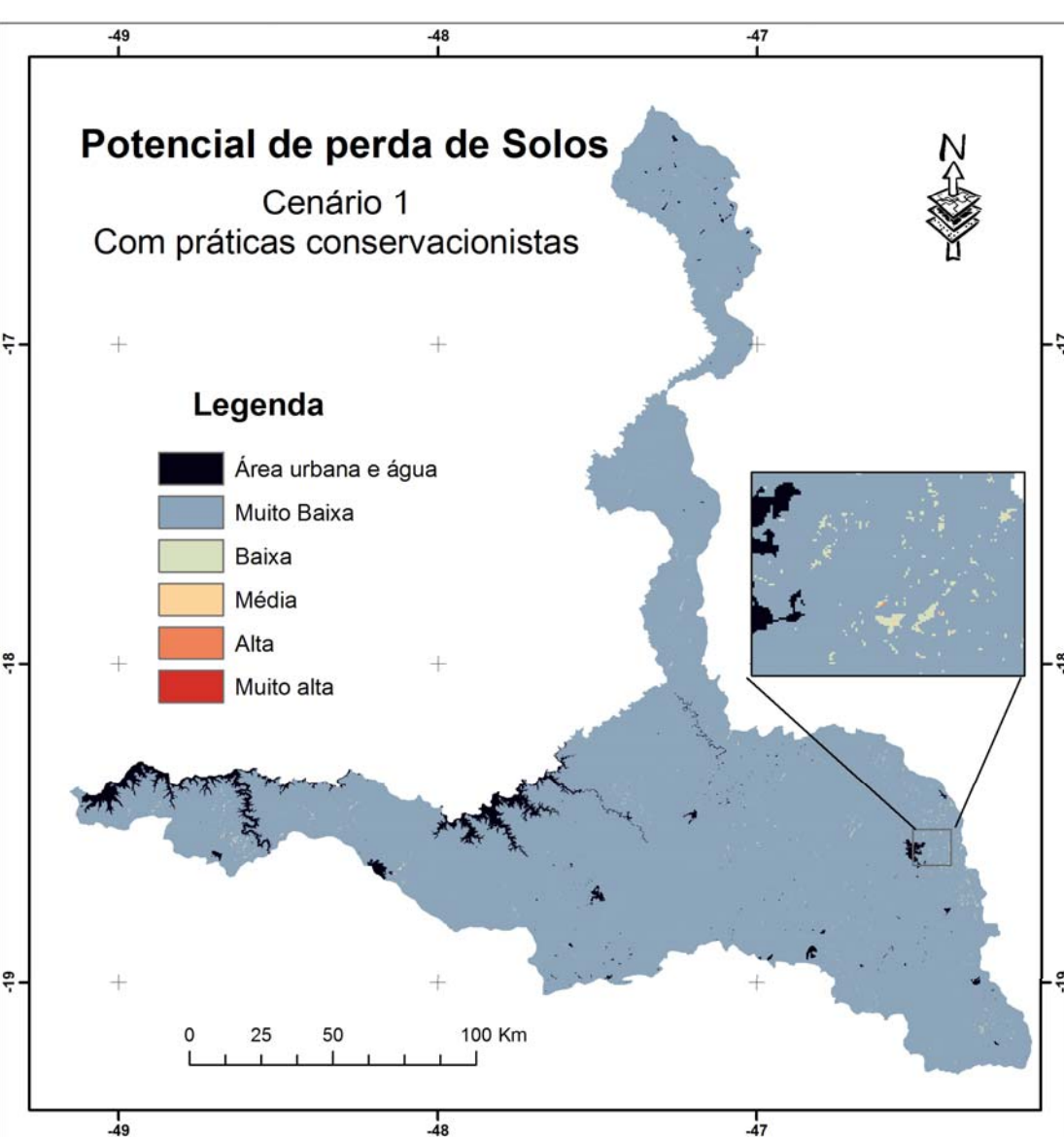
Cenário 2
Sem práticas conservacionistas

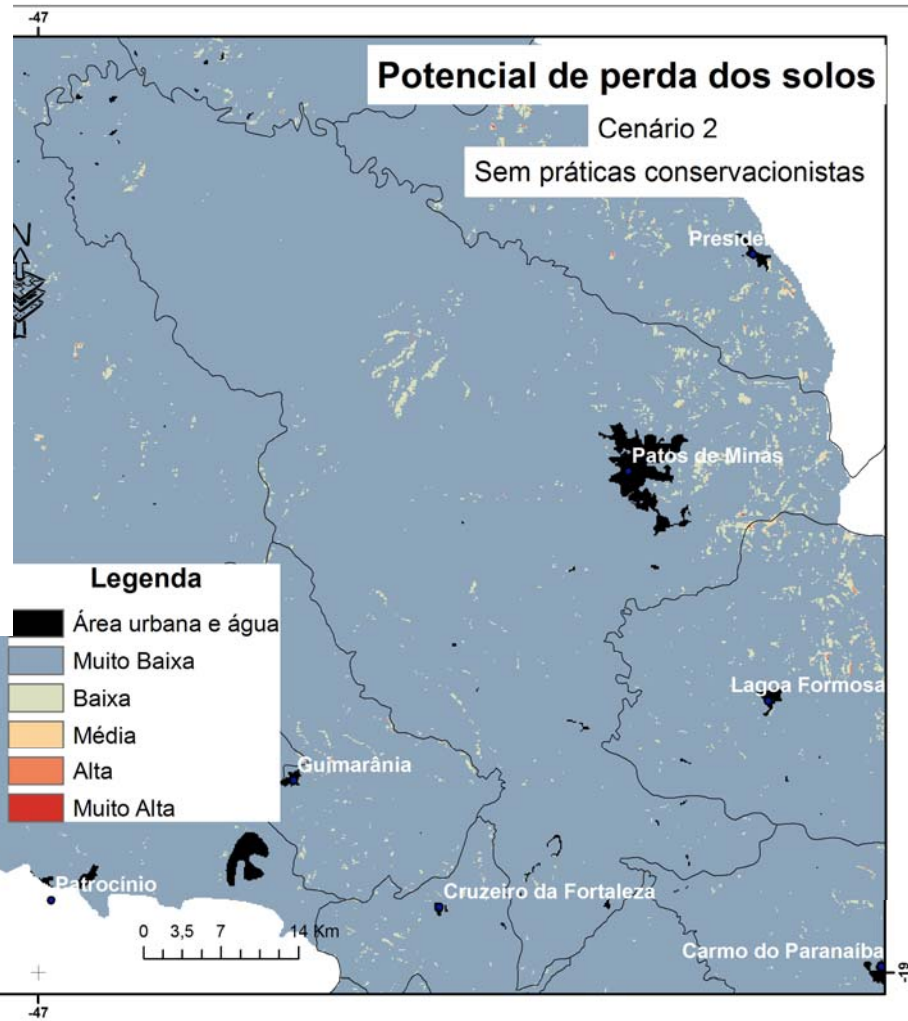
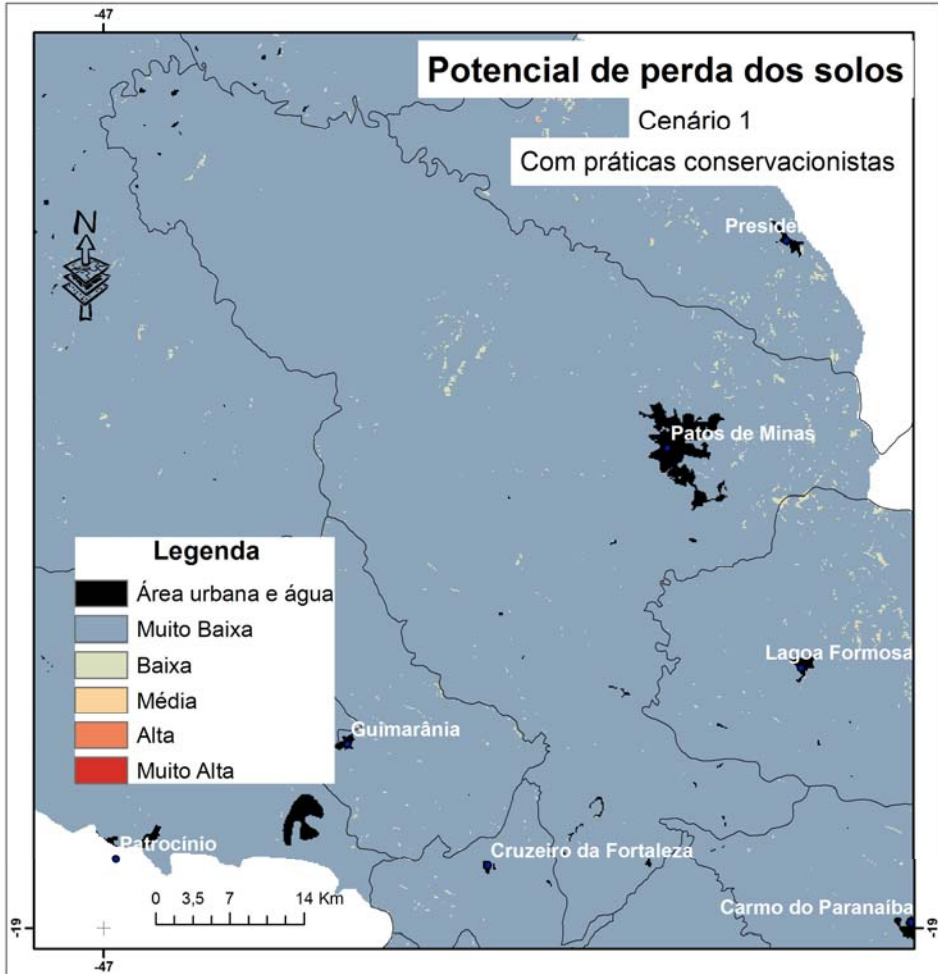


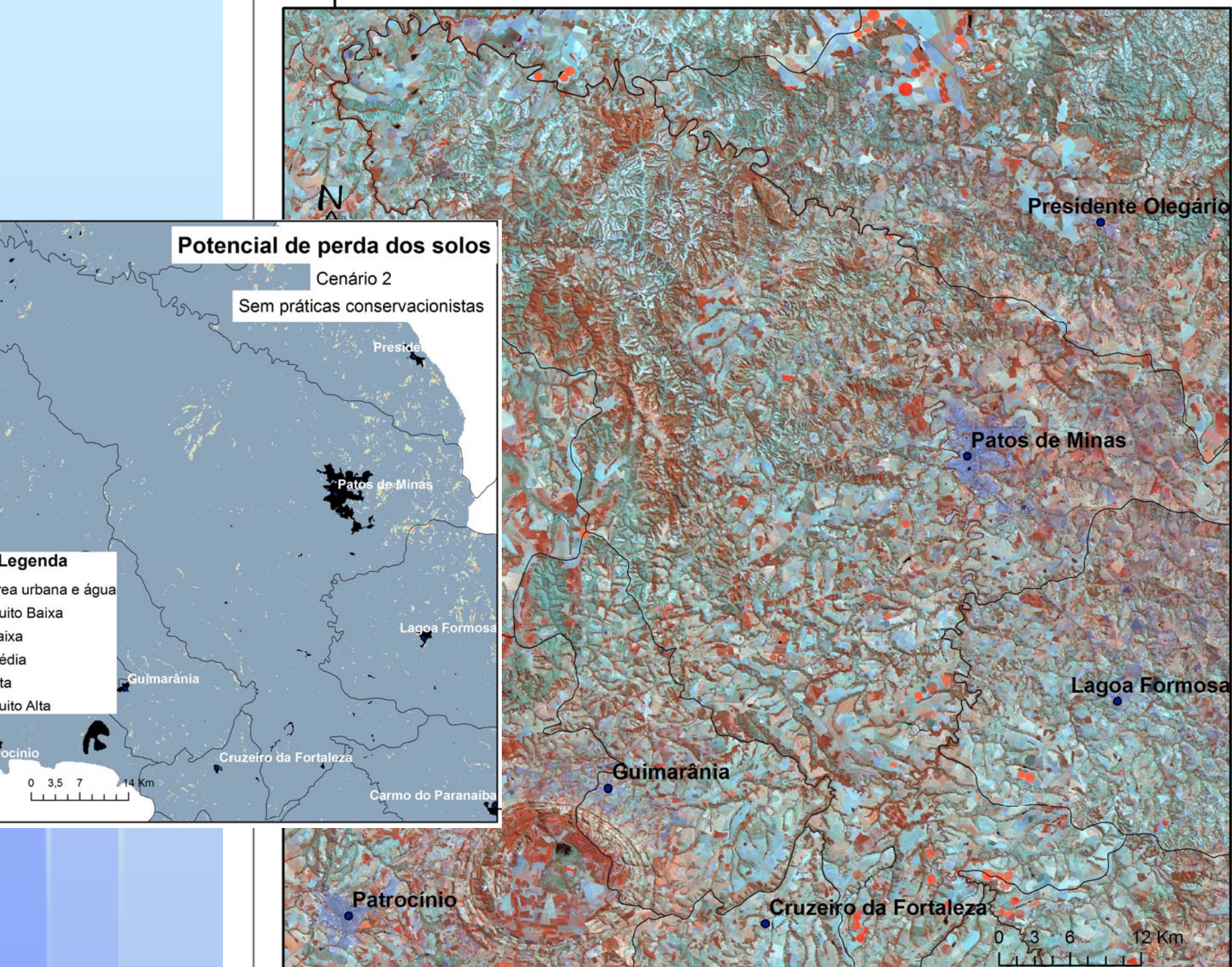
Legenda

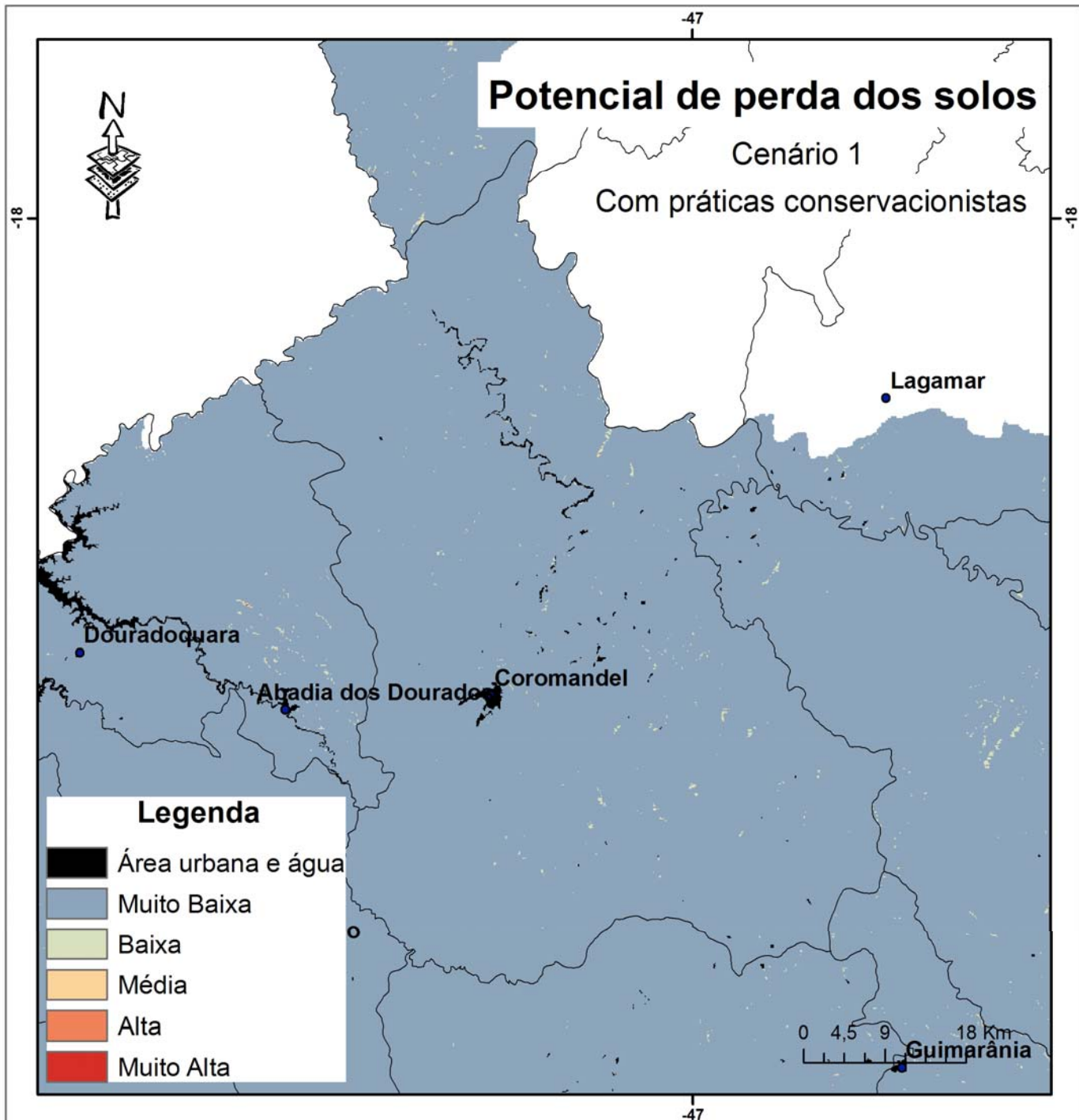
- Área urbana e água
- Muito Baixa
- Baixa
- Média
- Alta
- Muito alta







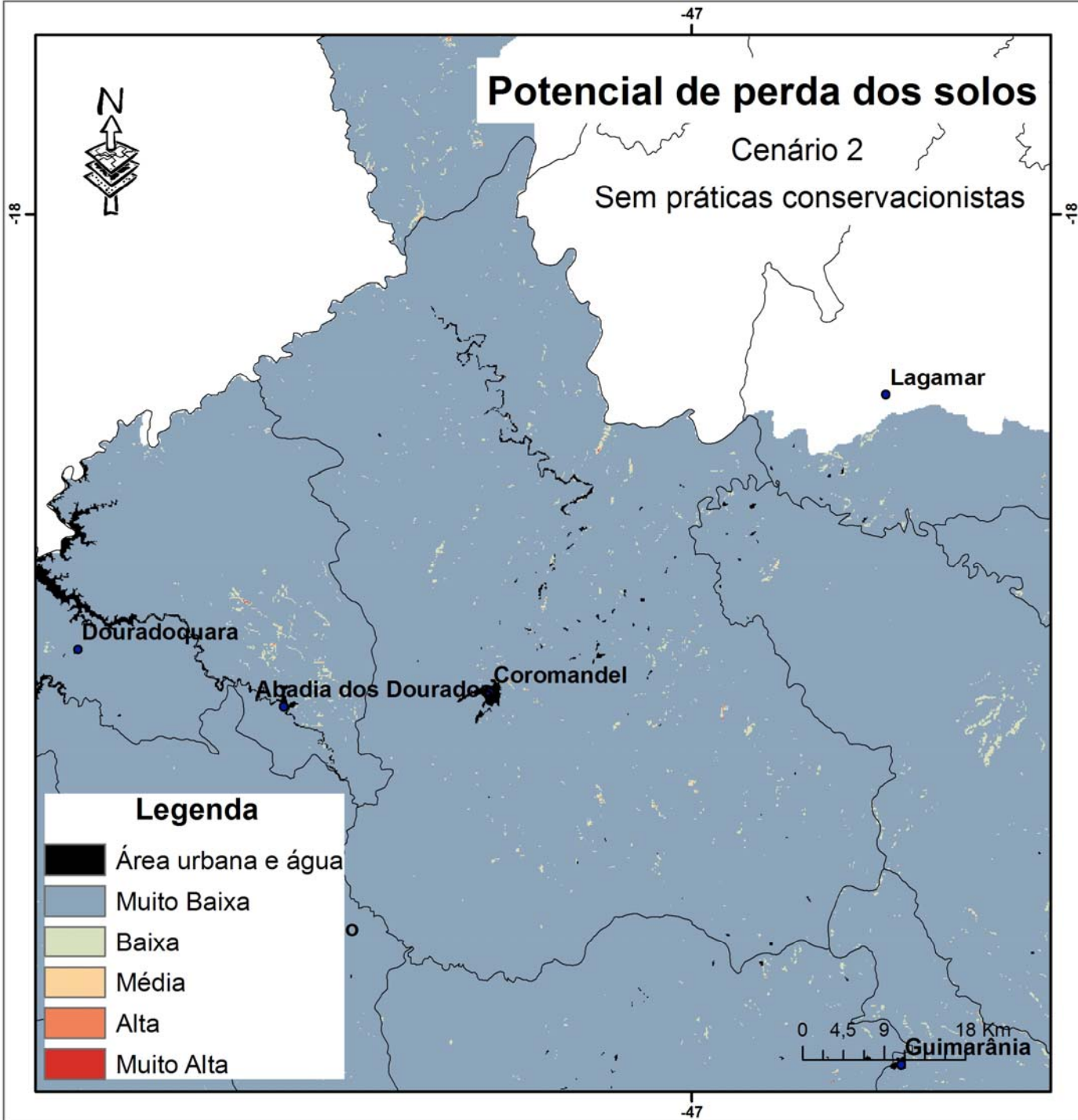




Potencial de perda dos solos

Cenário 2

Sem práticas conservacionistas



Obrigado!

Equipe do projeto:

Ivair Gomes – EPAMIG – ivair@epamig.br (Coordenador)

Marley Lamounier Machado – EPAMIG – marley@epamig.br

Maria Lélia Rodriguez Simão – EPAMIG – lelia@epamig.br

Marx Leandro Naves Silva – UFLA – mar@ufv.br (colaborador)

Elpídio Inácio Fernandes Filho – UFV – elpidio@ufv.br (colaborador)

Thomaz Correa e Castro da Costa – EMBRAPA (colaborador)

Daniel Pereira Guimarães – EMBRAPA (colaborador)

Eliane Maria Vieira – EPAMIG (colaborador)